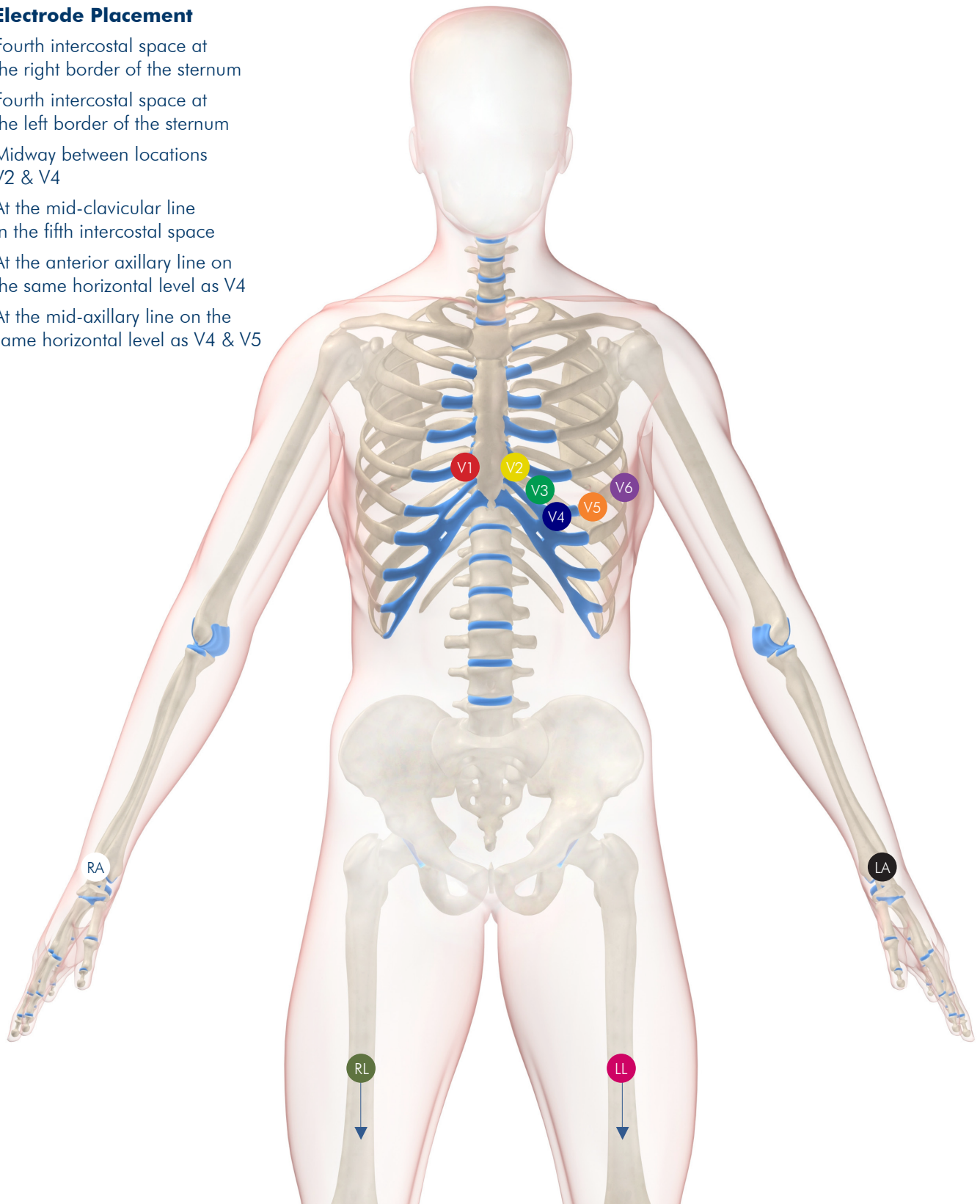


ECG lead placement

Lead Electrode Placement

- V1** Fourth intercostal space at the right border of the sternum
- V2** Fourth intercostal space at the left border of the sternum
- V3** Midway between locations V2 & V4
- V4** At the mid-clavicular line in the fifth intercostal space
- V5** At the anterior axillary line on the same horizontal level as V4
- V6** At the mid-axillary line on the same horizontal level as V4 & V5



Tips and tricks

To ensure a good quality ECG and minimise the skin/electrode resistance, remember the following points:

- Ensure that the patient is warm and relaxed
- Shave electrode area before cleaning
- Thoroughly clean the area with alcohol swab if the patient has cream or excessive dirt on the skin
- Let dry prior to applying electrode OR
- Use trace prep to abrade the skin if clean
- For correct placement on women - place V3 on the breast and V4 through V6 below the breast